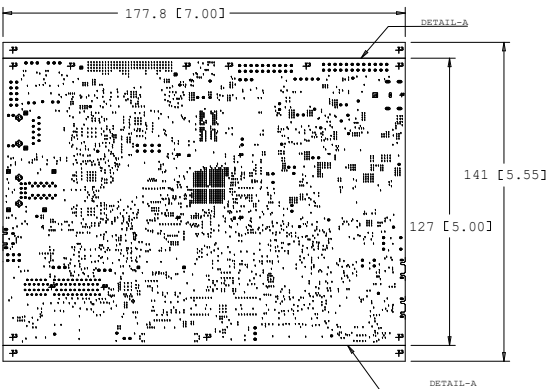


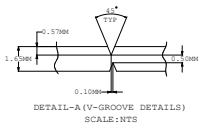
REVISIONS		
REV #	DESCRIPTION	DATE
REV #	CCN #	DDMMYY

FABRICATION NOTES:

- [illegible]



DRILL CHART: TOP TO BOTTOM					
FIGURE	COLLARS	COLLARS	PLATED	PLATED	QTY
1	1.5	+1.0/-3.0	PLATED	PLATED	3162
2	28.0	+0.0/-3.0	PLATED	6	1
3	40.0	+0.0/-3.0	PLATED	6	1
4	40.0	+2.0/-2.0	PLATED	33	3
5	40.0	+0.0/-3.0	PLATED	191	1
6	40.0	+0.0/-3.0	PLATED	191	1
7	40.0	+0.0/-3.0	PLATED	191	1
8	40.0	+0.0/-3.0	PLATED	191	1
9	78.0	+0.0/-3.0	PLATED	1	1
10	78.0	+0.0/-3.0	PLATED	1	1
11	40.0	+0.0/-3.0	NON-PLATED	2	2
12	40.0	+0.0/-3.0	NON-PLATED	2	2
13	10.0	+0.0/-3.0	NON-PLATED	2	2
14	10.0	+0.0/-3.0	NON-PLATED	2	2
15	12.0	+0.0/-3.0	NON-PLATED	2	2
16	12.0	+0.0/-3.0	NON-PLATED	2	2
17	128.0	+0.0/-3.0	NON-PLATED	4	4
18	128.0	+0.0/-3.0	NON-PLATED	4	4
19	52.042.0	+0.0/-3.0	PLATED	4	4
20	52.042.0	+0.0/-3.0	PLATED	4	4
21	44.042.0	+0.0/-3.0	PLATED	2	2
22	44.042.0	+0.0/-3.0	PLATED	2	2
23	82.043.0	+0.0/-3.0	PLATED	2	2
24	82.043.0	+0.0/-3.0	PLATED	2	2




### IMPEDANCE SPECIFICATIONS

[illegible]

## LAYER STACKUP

LAYER NAME	FINISHED Cu	X-SECTION	DIELECTRIC THICKNESS
PRIMARY SIDE SILKSCREEN			[INCHES]
PRIMARY SIDE SOLDERMASK			
1.01 PADLAY-1	1.0x		0.0037
1.02 GROUND-PLANE-1	1.0x		0.004
1.03 INNER-SIGNAL-1	1.0x		0.0066
1.04 GROUND-PLANE-2	1.0x		0.005
1.05 POWER-PLANE-1	1.0x		0.009
1.06 POWER-PLANE-2	1.0x		0.0066
1.07 GROUND-PLANE-3	1.0x		0.005
1.08 INNER-SIGNAL-2	1.0x		0.004
1.09 GROUND-PLANE-4	1.0x		0.0037
1.10 SECONDARY SIDE	1.0x		
SECONDARY SIDE SOLDERMASK			
SECONDARY SIDE SILKSCREEN			

SIGNATURES		DATE		 TEXAS INSTRUMENTS	FROC101C
LAYOUT BY UD		120422			
REVIEWED BY ZA		120422			
APPROVED BY AMB		120422			
AM64x EVM BOARD					
		SIZE D		Rev C	
		SCALE:NONE		SHEET 1 OF 17	